



March 23, 2012



“Kenyans Building Kenya”

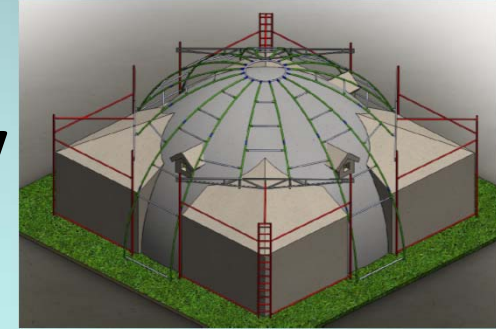
Proprietary to ACCL

Modern Arch Structure

- Not a Dome, but an Arch
- Reinforced Concrete
 - Shotcrete
 - MAS™ 1300
 - 1,300 sqft 1st & 500 sqft 2nd Floor
 - MAS™ 570
 - Single Storey 570 sqft
- Complete in 4-7 days
 - 8 hour Shifts per Day
- Local Materials



- **20 Year Unconditional Warranty**
 - Natural Disasters
 - Fires
 - “Acts of God”



- **MAS™ Monolithic 4 Inch Walls**
 - 4 Layers of Shot crete
- **Walls – Smooth, Textured or Stamped**
 - Shingles
 - Rock
 - Brick
 - Block
 - Wood
 - Let Your Imagination Run!

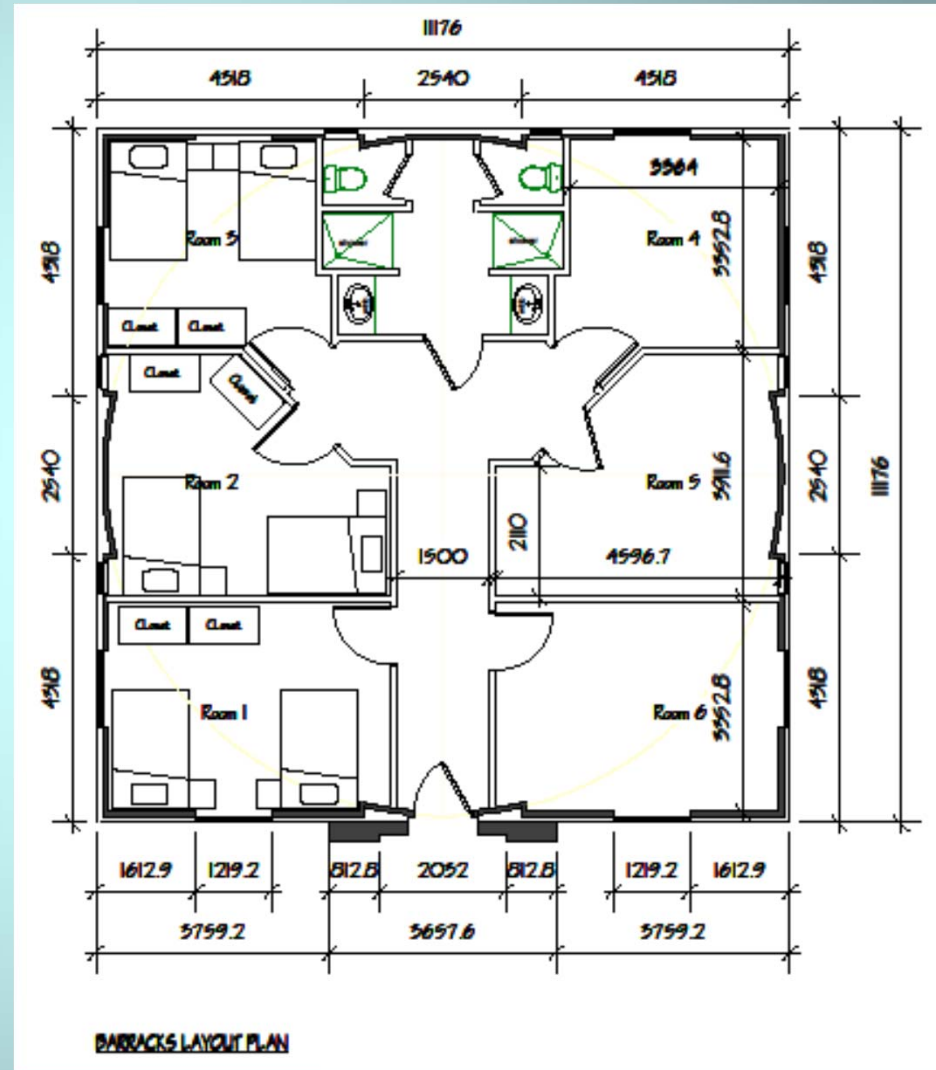


- **Insulation is MAStilite™**
 - Up to R60 Value Equiv
 - Conduit in Insulation
 - Sound Absorbing
 - Can texture as you like
- **Interior Design**
 - Open or Rooms
 - Mezzanine or not



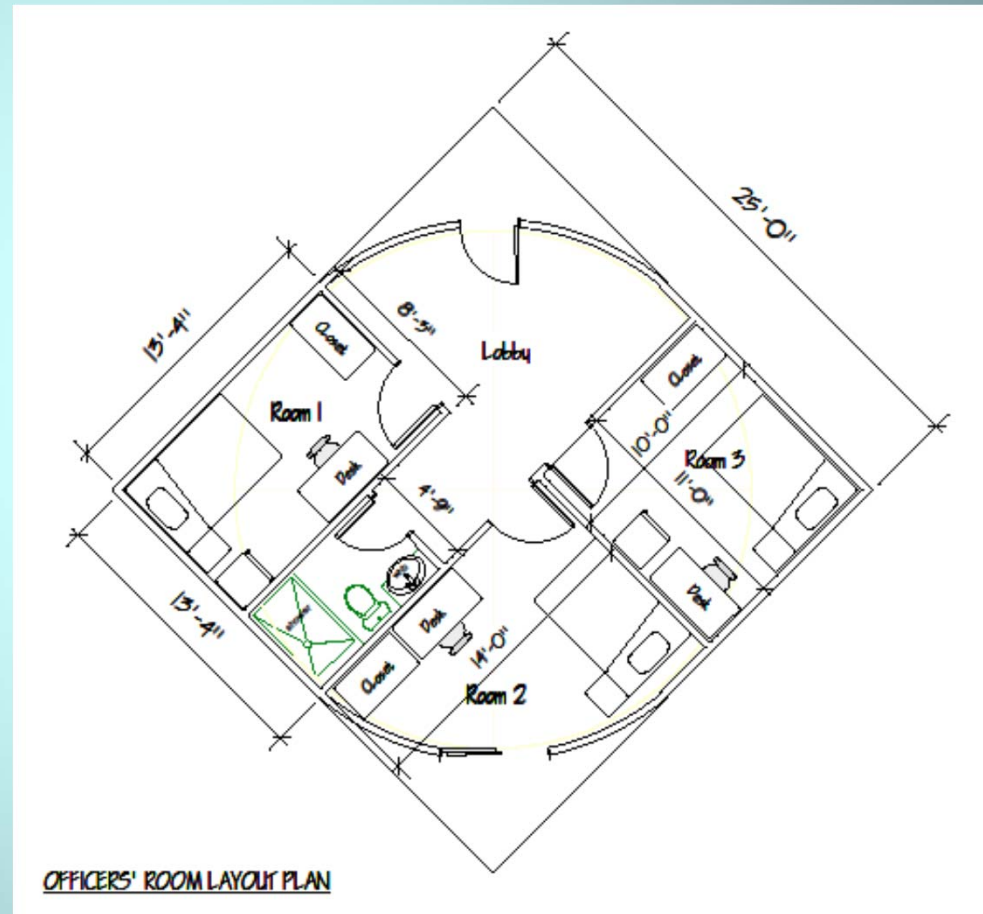
MAS™ 1300 Barracks

- **AP Barracks**
 - 5 Buildings
 - 60 Police Total
 - 12 to a Building
- **Service Staff**
 - 1 Building
 - 12 Service Staff
- **Security Force**
 - 1 Building
 - 24 Force Total
 - Bunk Beds



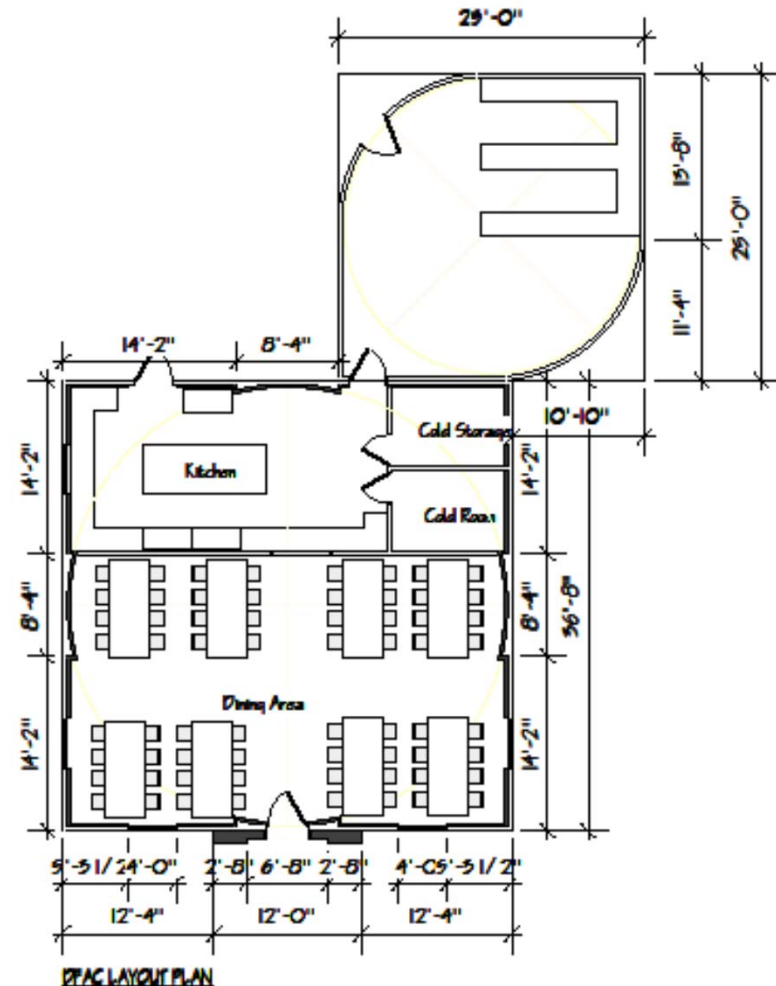
MAS™ 570 Officers Quarters

- **Officers Quarters**
 - 1 Building
 - 3 Officers
 - Lobby
 - Shared Bathroom
 - Single Bedrooms
 - Bed
 - Wall Locker
 - Desk
 - Nightstand
 - Refrigerator



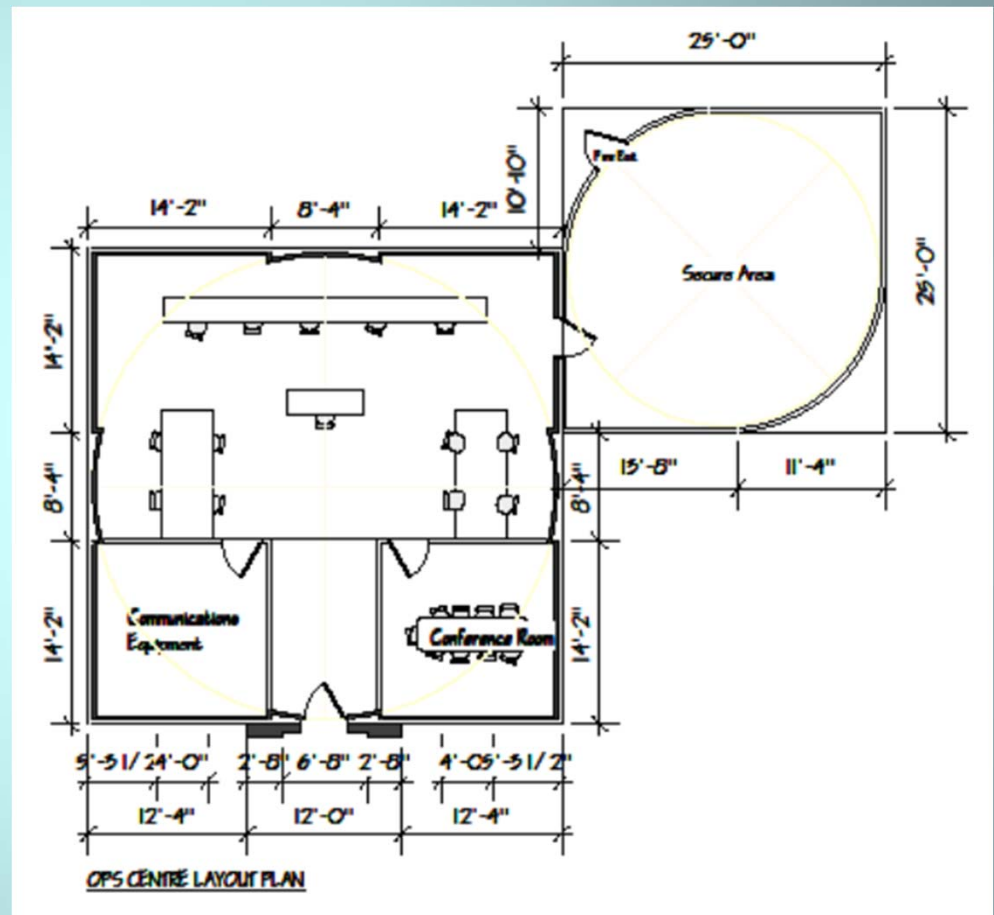
- **DFAC**

- **Full Kitchen**
 - **Serving Line**
 - **Cold Storage**
 - **Freezer**
 - **Refrigeration**
 - **Dry Storage**
- **Capacity of 64**
- **Optional Uses**
 - **Classroom**
 - **MWR**



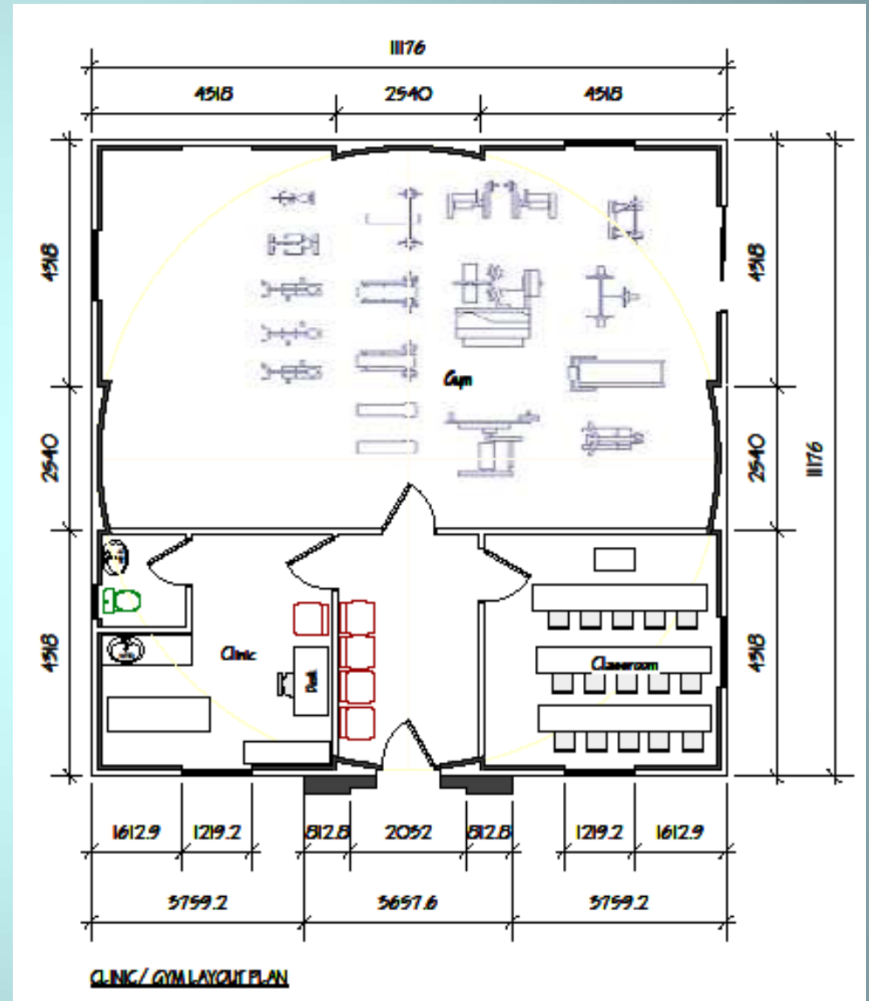
MAS™ 1300 & 570 Ops Center

- **Operations Center**
 - **Main Building 1300**
 - Conf Room
 - Comm Room
 - Design TBD
 - Ops Center
 - **Secure Building 570**
 - Configured to Ops



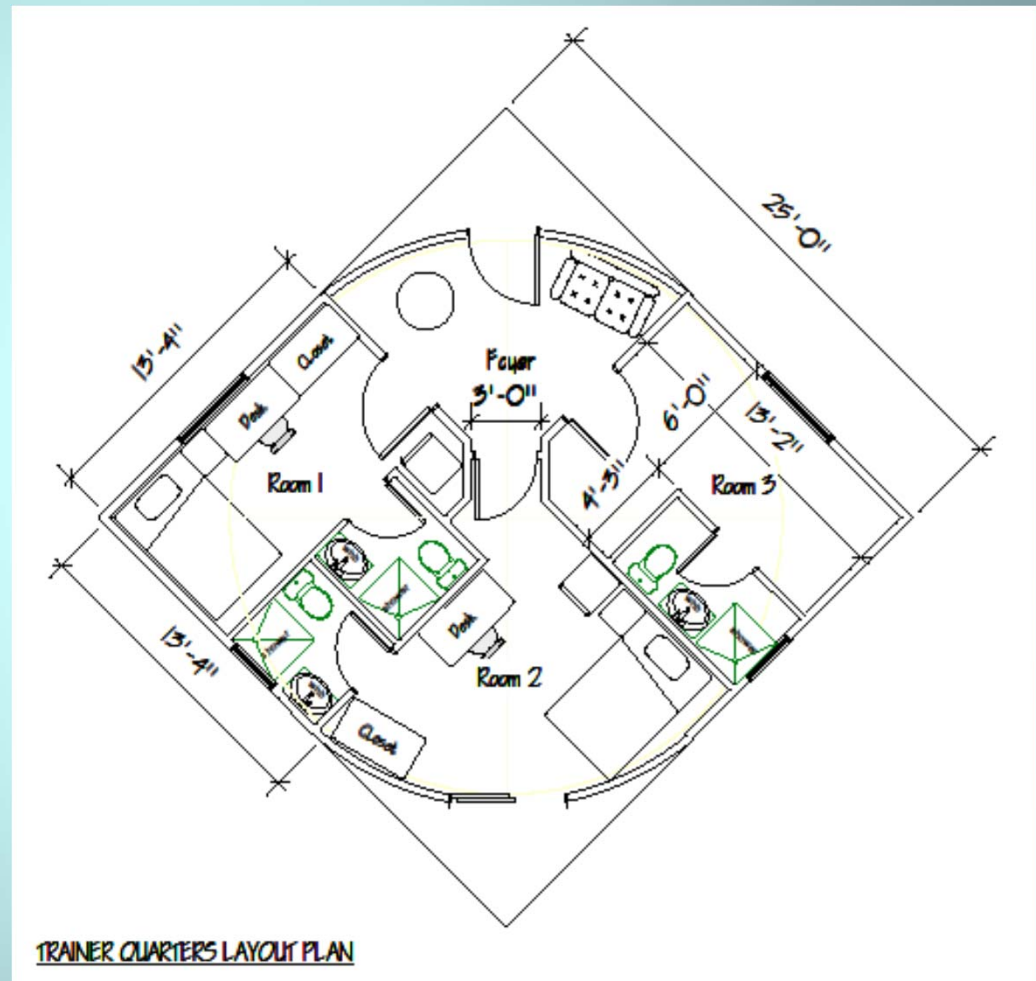
MAS™ 1300 Gym - Med

- **Gym**
 - Cardio Equip
- **Medical Clinic**
 - Treatment Room
- **Classroom**
 - Seats 15
- **Small Mezzanine**
 - 2nd Floor Loft - Storage



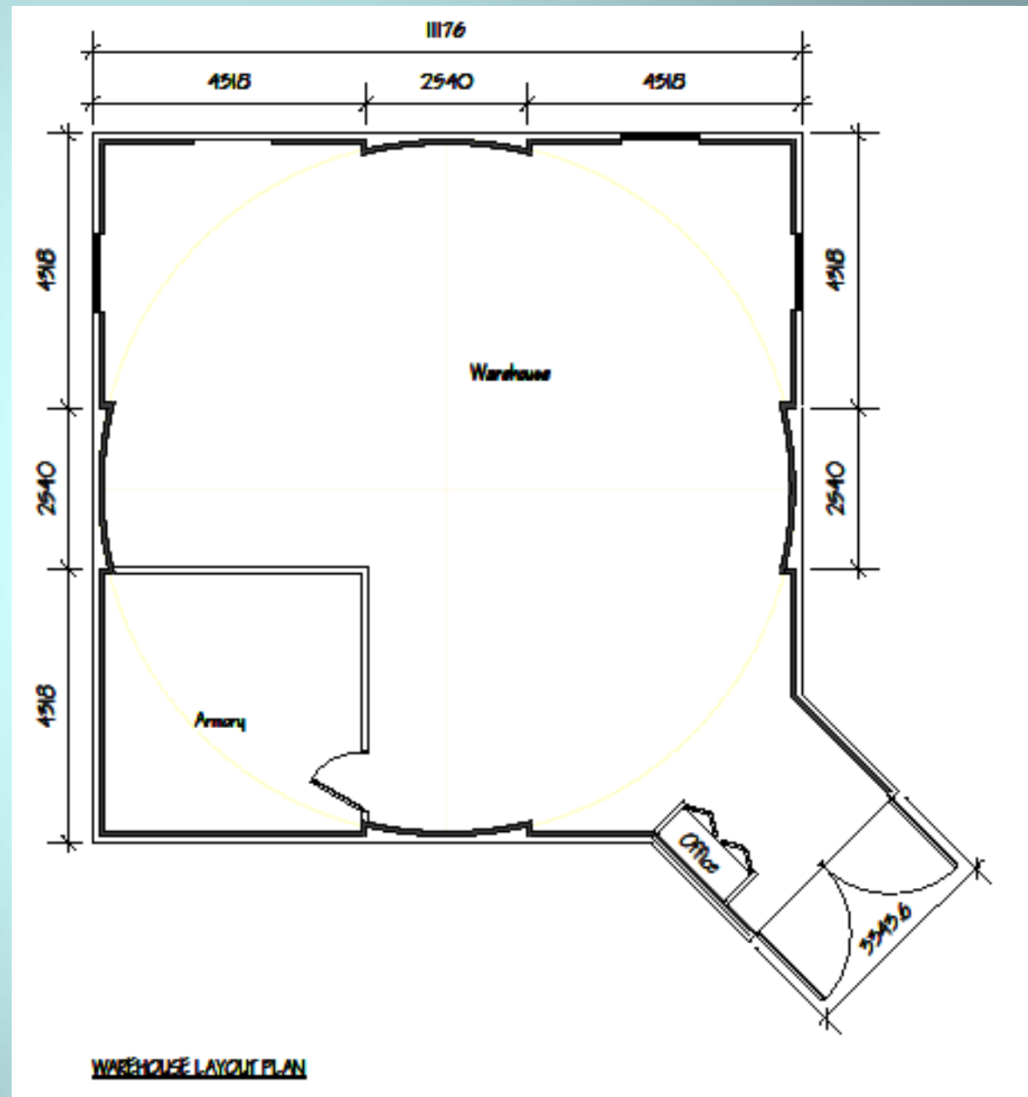
MAS™ 570 Trainers & Staff

- **Trainer's Quarters**
 - 5 Buildings
- **Sr. Service Staff**
 - 1 Building
- **Configuration**
 - Holds 3 People
 - Common Area
 - Patio
 - Individual Loo



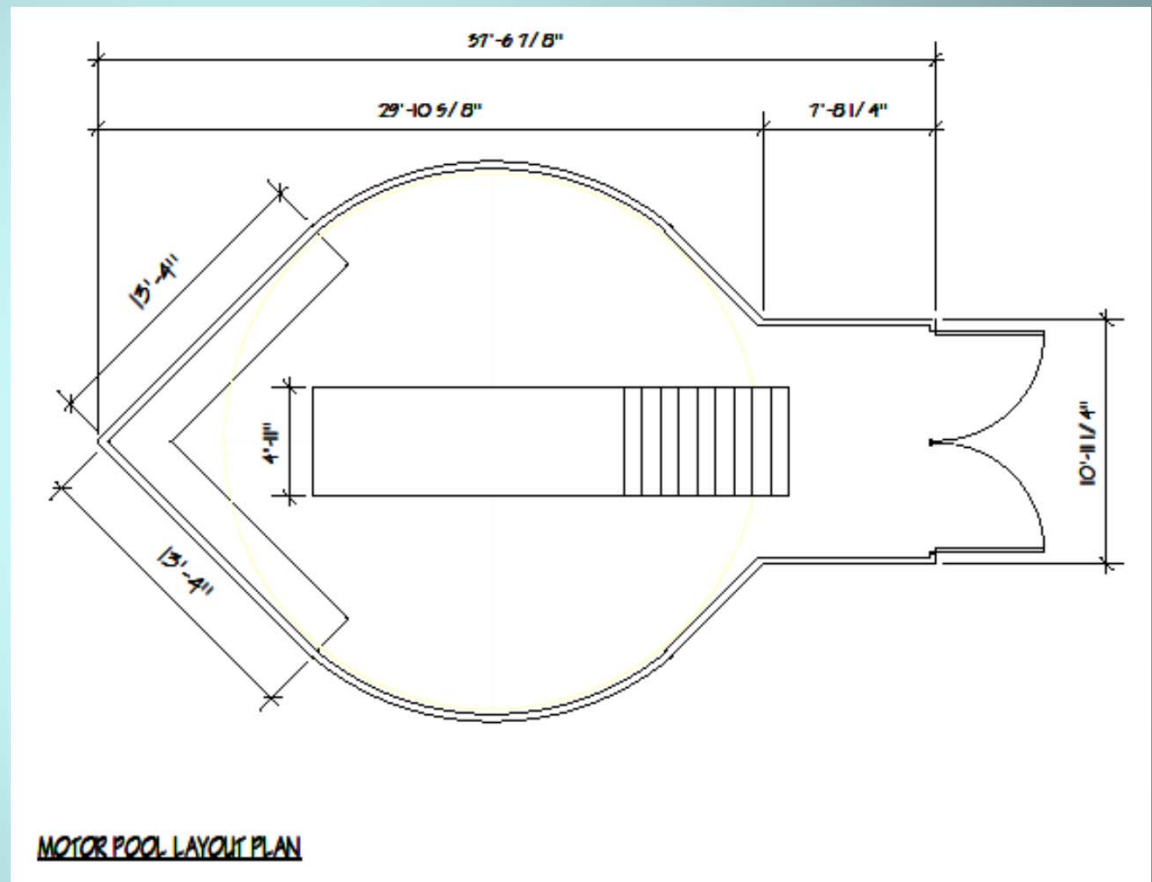
MAS™ 1300 Warehouse

- **Warehouse**
 - **Storage**
 - Over 160 Pallets
 - Logistician Office
 - **Armory**
 - Small Arms



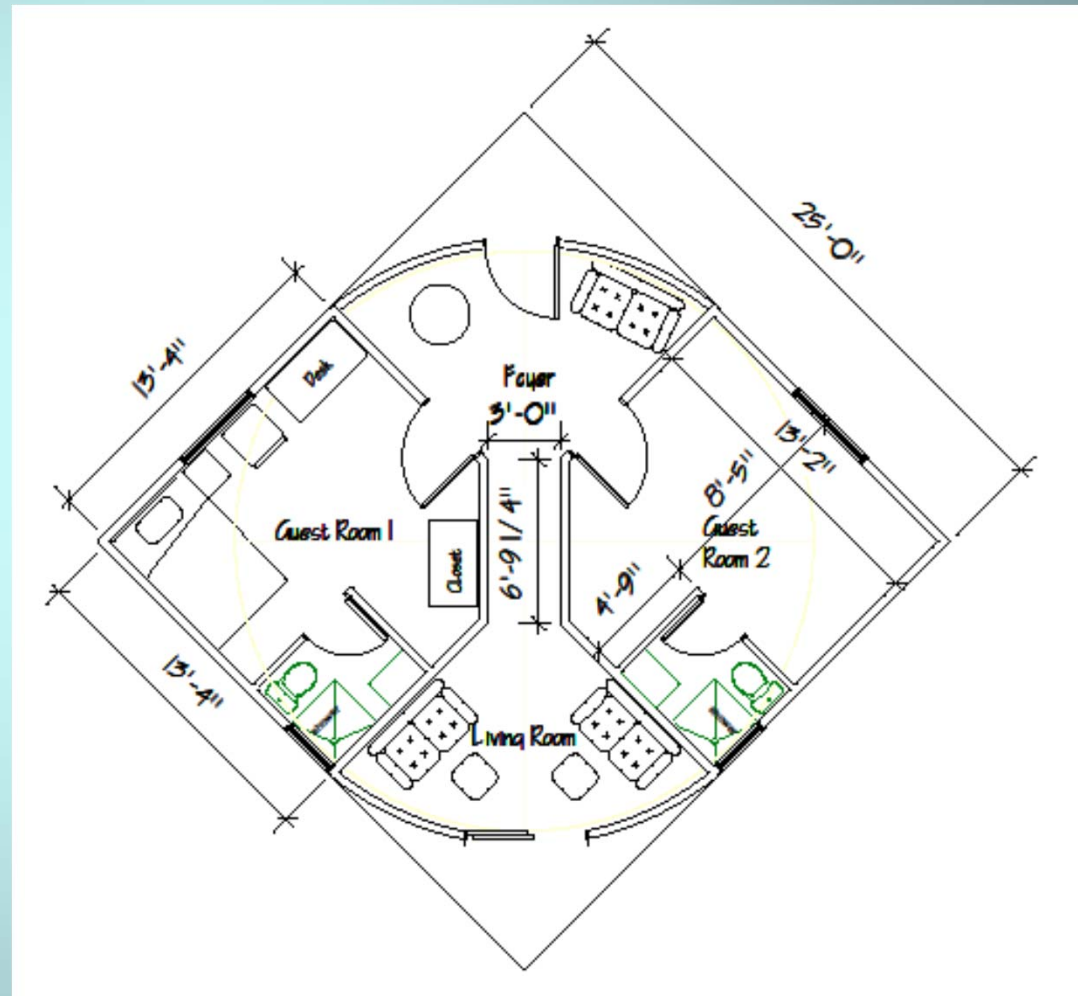
MAS™ 570 Motor Pool

- **Motor Pool**
 - **One Vehicle**
 - Hilux
 - Land Cruiser
 - Humvee
 - **Mechanic Pit**
 - **Tool Storage**
 - **Repair Parts**



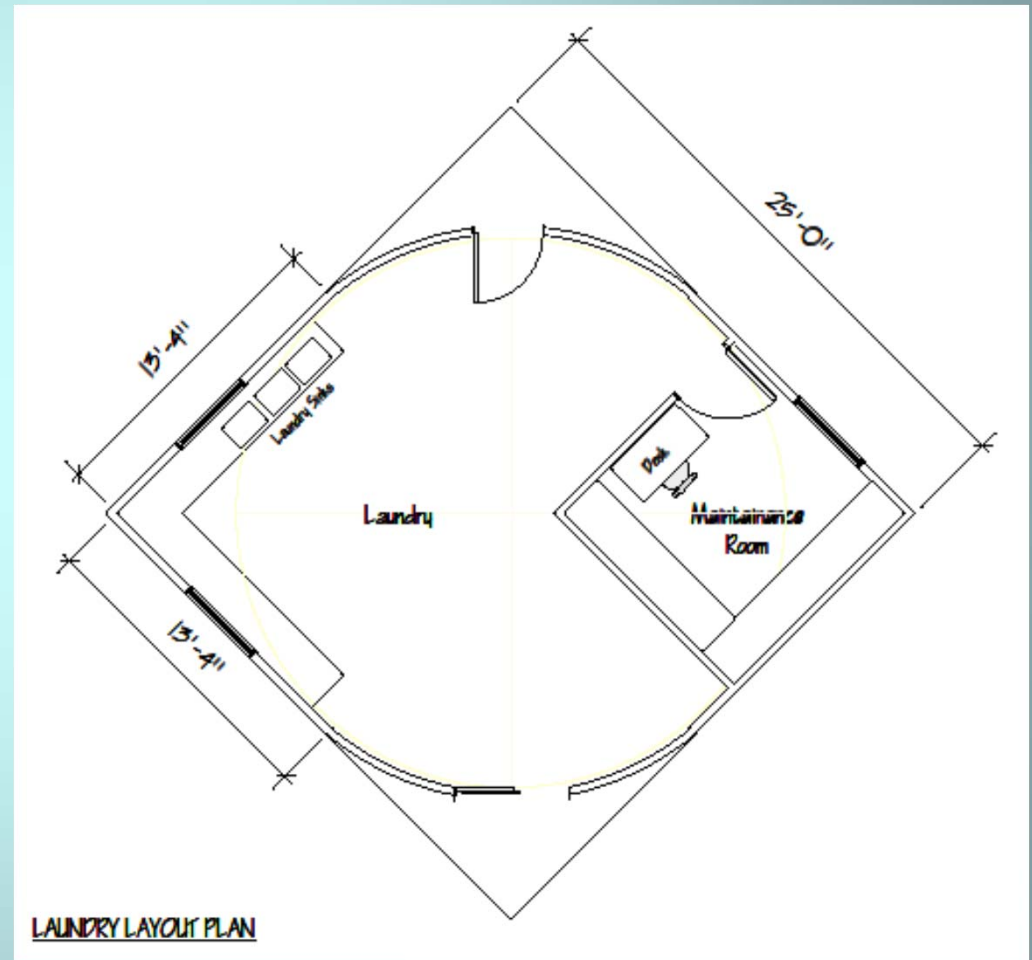
MAS™ 570 VIP Quarters

- **VIP Quarters**
 - **1 Building**
 - 2 Bedrooms
 - Foyer
 - Living Room
 - Patio
 - Individual Loo



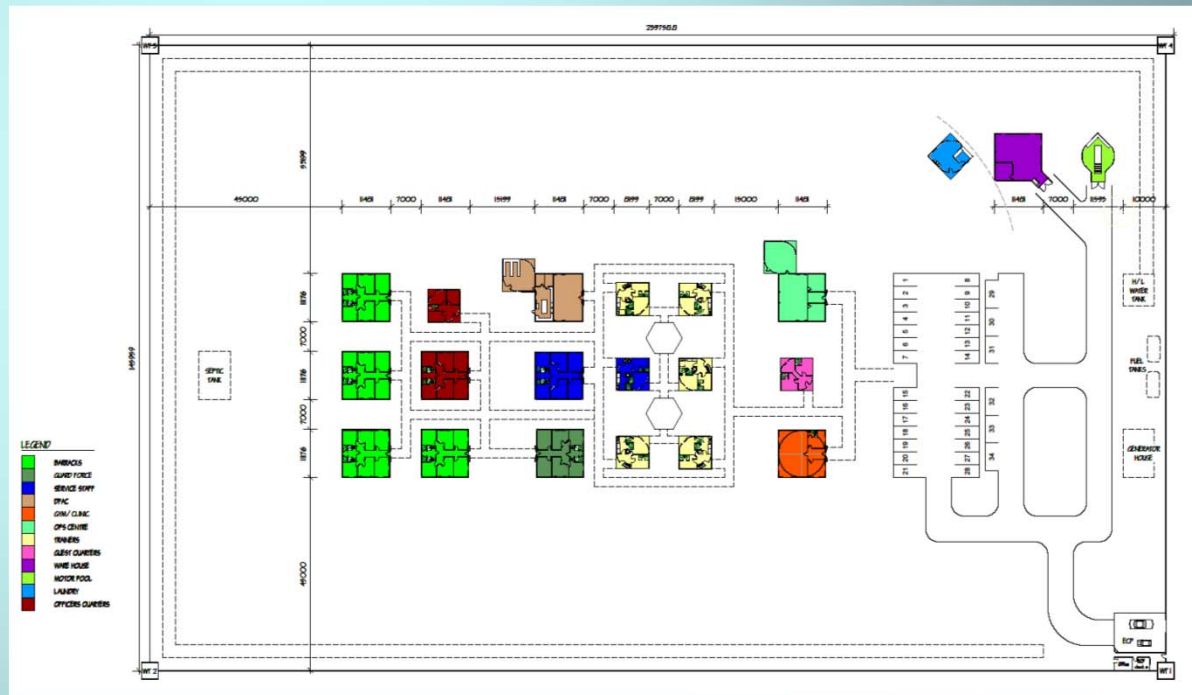
MAS™ 570 Laundry & Maint

- Laundry
- Maintenance Shop
 - 1 Building
 - Washing Machines
 - Pressing
 - Maintenance Shop
 - Office



MAS™ FOB Dadaab

- **Overall Compound - 240m X 146m**
 - **Houses 119 People**
 - 60 Admin Police
 - 27 Guard Force
 - 15 Trainers
 - 15 Service Staff
 - 2 VIP Guests
 - **Security**
 - Entry Control
 - 4 Guard Towers
 - **Utilities**
 - Septic, Standby Emergency Gensets & Fuel Tanks



Questions?

