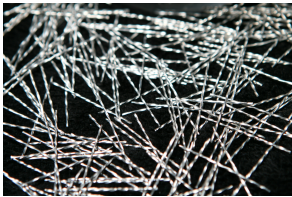


# HELIX™

## Helix 5-25

**Description:** Helix fibers are filaments of wire, twisted and cut to length, for reinforcement of concrete, mortar and other composite materials. Helix 5-25 is cold drawn wire fiber twisted in single pieces.



### Applications:

- Structural Walls
- Structural Floors
- Foundations
- Beams/Columns
- Shotcrete
- Paving
- Precast
- Rebar Replacement

### Geometry:

Length: 25 mm (1.00 in)      25,307 fibers/kg  
Diameter: 0.50 mm (0.02 in)

### Tensile Strength:

Tensile Strength: 1700 N/mm<sup>2</sup> minimum  
Material: High Carbon Steel Wire

### Coating:

Coating: Electroplated Zinc

### Approvals:

Product
<b>Turkey</b> TS 10513
<b>Germany</b> Z-3.71-1745
<b>Czech Republic</b> C.070-021415

Conforms to ASTM A820
<b>Product</b> <b>Poland</b> AT-15-2117/2001
<b>Romania</b> 007-01/068-2003
<b>Slovak Republic</b> 1402A/02/0771/1/C/C04

## Recommendations - Mixing

### 1.0 General

- ✓ Preferably use a central batching plant mixer.
- ✓ A continuous grading is preferred.
- ✓ Helix does not significantly increase mixing time.
- ✓ If special cements or admixtures are used, a preliminary test is recommended.

### 2.0 Fiber Addition: Pan/Drum Mixer

- ✓ Never add Helix as first component in mixer.
- ✓ Add Helix together with sand and aggregates or in freshly mixed concrete.

### 2.1 Fiber Addition: Truckmixer\*

#### Option 1

- ✓ First add 10-15 gallons of water to the mixer.
- ✓ Set the drum speed to max charging speed.
- ✓ Add Helix to the mixer at a controlled rate of 1 min per box making sure all clumps are broken up.
- ✓ Add the rest of the mix materials.
- ✓ Mix at max charging speed for 4-5 min (60 revolutions).

#### Option 2

- ✓ Add Helix as the last material in the mixer.
- ✓ Concrete slump should be 4-6" (100-150mm).
- ✓ Set drum speed to max charging speed (15-18 rpm) then add Helix to the mixer at a controlled rate of 1 min per box making sure any clumps are broken up.
- ✓ Mix at max charging speed for 4-5 min (60 revolutions).

### 2.3 Fiber Addition: Automatic Dosing

- ✓ Helix can be dosed from bulk at rates up to 200 kgs/min with specially designed dosing equipment.

\*Instructions intended for projects done within the United States. Please contact your local Helix representative for instructions outside the US.

## Recommendations - Storage



Do not Stack Pallets  
on top of each other.



Protect pallets  
against rain.  
Wrapping Available.

### Delivered In:



Box - 45 lbs  
Pallet - 1620 lbs



Big Bag

# HELIX™

Polytorx, LLC \* 300 N. Fifth Avenue, Suite 130  
Ann Arbor, MI 48104  
PH: 734-322-2114 \* FX: 734-786-1633  
www.helixsteel.com